

APPLICATIONS

- Industrial force measurement
- Weighing of hanging silos, containers or hoppers
- Weighing of conveyors belts
- Hybrid weighbridges (mechanical conversion)
- Official calibration
- Hanging tanks or reactors
- Packaging, counting, dosing applications



DESCRIPTION

Universal force sensor combining accuracy, robustness and easy implementation.

- Large range of capacity : from 5 kN to 50 kN.
- Stainless steel.
- Protection classe: IP97
- Compact, small size.

TECHNICAL FEATURES

5 – (7.5) – 10 - (15) – 20 -30 -50 – 75 – 100 kN

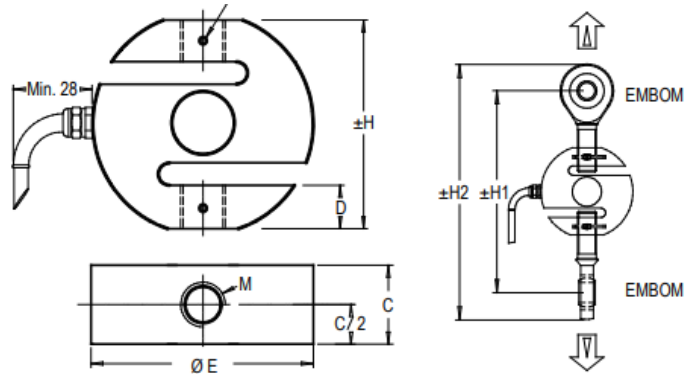
	0.1 %	0.03%	
Accuracy class	0,1% F.S.*	0,03% F.S.*	-
Combined error (non-linearity + hysteresis)	<± 0.1	<± 0.03	% F.S.
Repeatability error	<± 0.03	<± 0.015	% F.S.
Creep error over 30 min.	<± 0.06	<± 0.025	% F.S.
Zero shift after loading	<± 0.015	<± 0.0075	% F.S.
Reference temperature	23	23	°C
Compensated temperature range	-10...+45	-10...+45	°C
Service temperature range	-25...+70	-25...+70	°C
Storage temperature range	-50...+85	-50...+85	°C
Temperature coefficient of the sensitivity	<± 0.05	<± 0.015	% F.S./10°C
Temperature coefficient of zero signal	<± 0.035	<± 0.023	% F.S./10°C
Zero balance	± 0.02	± 0.02	mV/V
Sensitivity tolerance	<± 0.3	<± 0.2	%
Input resistance	350 ± 2	350 ± 2	Ohm
Output resistance	350± 2	350 ± 2	Ohm
Insulation resistance (50 V)	>5000	>5000	Megaohm
Reference excitation voltage	10	10	VDC
Permissible nominal range of excitation voltage	3..12	3..12	VDC
Nominal sensitivity	2	2	mV/V
Safe load limit	120	120	% F.S.
Breaking load	>300	>300	% F.S.
Static lateral force limit	50	50	% F.S.
Permissible dynamic loading	60	60	% F.S.

F.S. : Full Scale.

Specifications subject to change without notice.

STANDARD DIMENSIONS

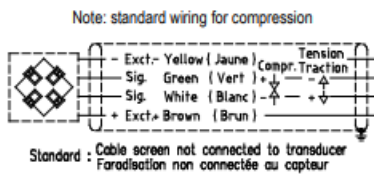
2710-E / 2710-F



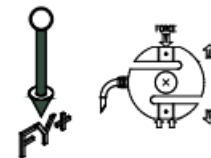
Ref. Item*	Capacités	ØA	H	C	D	E	ØE	M	H1	H2	CL (m)	Déformation à pleine échelle	Poids (kg)	ACCESSOIRES			
														APPUI	SUPOR	EMBOM	C2712
2710-E	5 - 15 kN	4	76	28	16	/	79	M16	177	222	3	0.30	0.85	APPUI-16	SUPOR-30	EMBOM-M16-BA	/
2710-F	20 - 50 kN	4	116	38	30	/	128	M24x2	238	302	3	0.35	2.6	APPUI-24	SUPOR-36	EMBOM-M24x2-BA	/

OTHERS

- Wiring



- Load direction



SPHEREL Systems reserves the right to make any kind of design or functional modification at any moment without prior notice.