

## APPLICATIONS

- Industrial force measurement
- Weight control.



## DESCRIPTION

Sealed and compact compression sensors.

Material:

- 5960: Stainless steel
- 5962: anodised aluminium alloy

Class protection: IP65

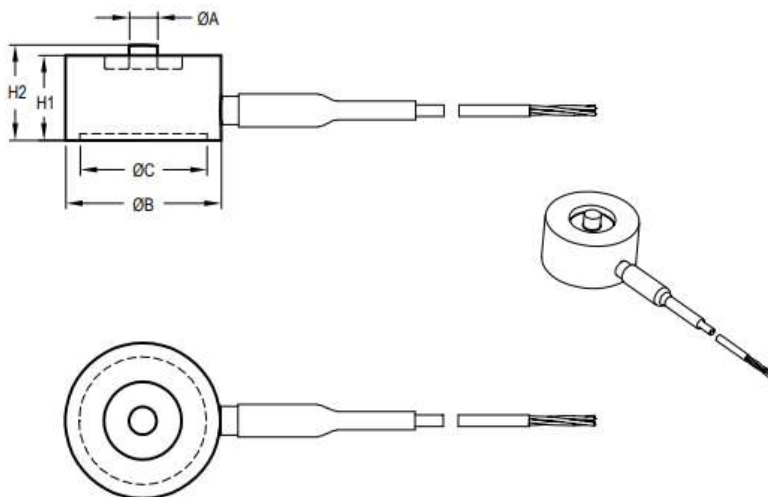
Capacities:

- 5960: 200 – 300 – 500 N
- 5962: (0.75) – 1 – (1.5) – 2 – (3) – 5 – (7.5) – 10 – (15) – 20 kN

**TECHNICAL FEATURES**

	1 %	
<b>Combined error (non-linearity-hysteresis)</b>	<± 1	% F.S.
<b>Repeatability error</b>	<± 0.5	% F.S.
<b>Creep error over 30 min.</b>	<± 0.25	% F.S.
<b>Zero shift after loading</b>	<± 0.2	% P.E.
<b>Reference temperature</b>	23	°C
<b>Compensated temperature range</b>	-10...+45	°C
<b>Service temperature range</b>	-30...+70	°C
<b>Storage temperature range</b>	-50...+85	°C
<b>Temperature coefficient of the sensitivity</b>	<± 0.2	% P.E./10°C
<b>Temperature coefficient of zero signal</b>	<± 0.2	% P.E./10°C
<b>Zero balance</b>	± 0.05	mV/V
<b>Nominal sensitivity</b>	1.5	mV/V
<b>Sensitivity tolerance</b>	<± 0.3	%
<b>Input resistance</b>	1000 ± 3	ohm(s)
<b>Output resistance</b>	1000 ± 3	ohm(s)
<b>Insulation resistance (50 V)</b>	>5000	Mohm(s)
<b>Reference excitation voltage</b>	5	VDC
<b>Permissible nominal range of excitation voltage</b>	3..10	VDC
<b>Safe load limit</b>	120	% F.S.
<b>Breaking load</b>	> 300	% F.S.
<b>Permissible dynamic loading</b>	40	% F.S.

F .S.: Full Scale

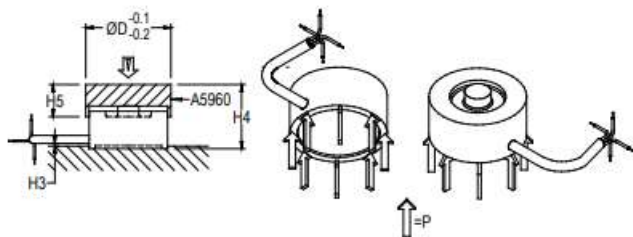
**STANDARD DIMENSIONS**

**ORDER CODE**

Ref. Item*	Capacités	ØA	ØB	ØC	H1	H2	P (N/mm <sup>2</sup> )	Déformation à pleine échelle	H3 (Max)	H4	H5	ØD	Poids (kg)
5962-A	200 - 500 N	4	22	19.75	12	13.5	2.7 to 6.8	0.08 to 0.12	1.5	17.5	8	24	± 0.042
5960-B	750 - 5000 N	4	22	19.75	12	13.5	10.16 to 68	0.08 to 0.12	1.5	17.5	8	24	± 0.052
5960-C	10 - 20 kN	8	29.5	23	14	16	37.3 to 0.20	0.14 to 0.20	2	24	12	32	± 0.091

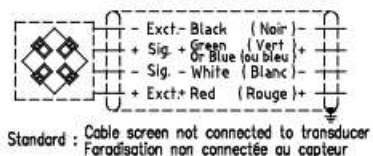
Dimensions in mm

OTHER

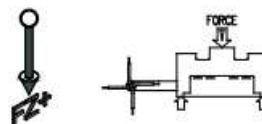
- Other



- Wiring



- Load direction



*SPHEREL Systems reserves the right to make any kind of design or functional modification at any moment without prior notice.*